



■ Some of the photos may include optional equipment.

We build a better future

HYUNDAI LPG FORKLIFT TRUCKS **Applied Tier 4 Engine**

60L/70L-7A

 **HYUNDAI**
CONSTRUCTION EQUIPMENT AMERICAS, INC.



■ Some of the photos may include optional equipment.

Beyond the Limits

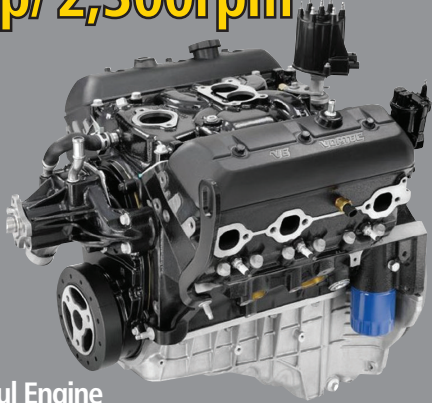
Hyundai introduces a new line of 7A series
LPG forklift trucks.
Excellent power and performance make your
business more profitable.



The new master on the job-site!

Smooth running, efficient and ergonomically designed, 60/70L-7A series are made to meet your needs.

94hp/ 2,300rpm

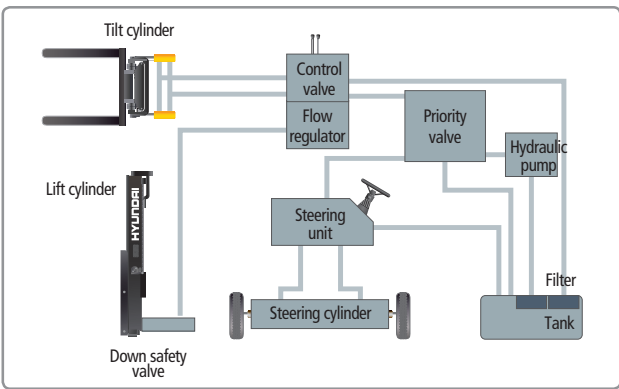


Powerful Engine GM 4.3L V6 Engine

Market approved quality of GM 4.3L V6 engine ensures incomparable performance, durability and additional value to the machine. This powerful and efficient engine provides excellent fuel economy and torque to provide great productivity.
(EPA/CARB Tier-IV Certified)

Fast and Stable Performance

Being able to quickly raise and lower the mast, as well as tilt it forward and backward, provides the best operational conditions during unloading. When the truck is fully loaded, mast lowering speed is carefully controlled to ensure safety by the down control valve. Mast(Lift and Tilt) Lock System is standard.



State-of-the-art Hydraulic System

The large-capacity hydraulic system responds quickly during operation, and a low-noise control valve increases both efficiency and durability.



Fully Hydrostatic Power Steering

This provides smooth and flexible steering, preventing overrun and kick-back.



■ Some of the photos may include optional equipment.



Increased Mast Tilting Angle
Utilizing the mast tilting angle of 15 degrees forward and 10 degrees backward, the operator can safely and rapidly perform loading and unloading jobs.

Faster Travel Speed & Better Gradability

The powerful high-output engine provides greater acceleration, better gradability and faster travel speed on any tough terrains or slopes.

Gradability(Loaded)
60L-7A: 45.6%
70L-7A: 40.6%

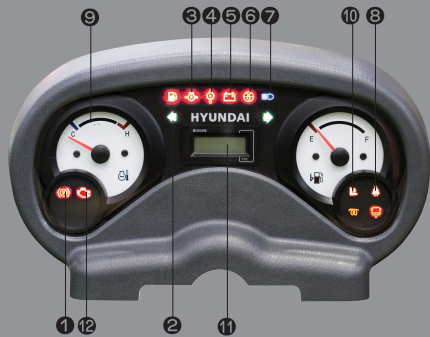
Travel Speed(Unloaded)
60L-7A: 14 mph
70L-7A: 14 mph



Ergonomic operator friendly compartment design!

A design based on human engineering relieves fatigue and increases operator's efficiency.

Operator Friendly Gauges and Water-resistant Monitor Panel



- ① Parking brake lamp
- ② Turn lamp
- ③ Engine oil warning lamp
- ④ Transmission oil temperature warning lamp
- ⑤ Battery charging warning lamp
- ⑥ Air cleaner filter warning light
- ⑦ Working light indicator
- ⑧ Seat belt warning
- ⑨ Water temperature gauge
- ⑩ OPS warning
- ⑪ Hour meter
- ⑫ Engine check lamp
- ⑬ Brake oil warning lamp



Full Suspension Seat

An attractive and adjustable seat, based on a human engineering design, provides great comfort, safety and durability.



New High Visibility for Safe Operation

The operator is able to work with increased safety and accuracy due to a wider view mast.



Ergonomically Positioned Pedals

Based on human engineering, the accelerator, brake and inching pedals are optimally positioned for convenience while operating the equipment.



Cup Holder & Console Box

Additional storage spaces are located inside the operating space for operator's convenience.



Quick Response of Operating Control Levers

Only minimal operator's effort is required for precise, safe and productive control.



■ Some of the photos may include optional equipment.



Adjustable Steering Wheel

Steering wheel with horn button can be adjusted by a lever on the right-hand side for the most comfortable operator position.



Easy and Safe Shift Lever

A single lever on the left side of the steering column gives the operator fast, easy control of direction. The lever must be in the neutral position before the engine can be started.

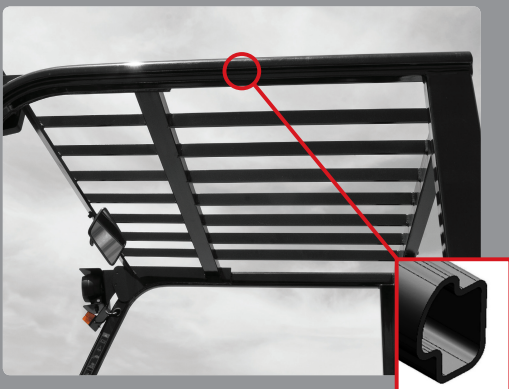


Secondary Horn

Secondary Horn gives access to lights and horn.

Danger-free through high durability!

Safety and durability are priorities in the design of the equipment.



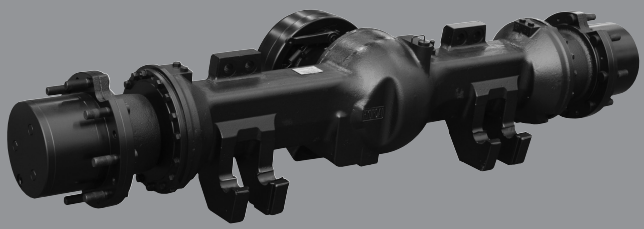
Strong Overhead Guard
The safety overhead guard meets ISO 6055 regulation and protects the operator during hazardous jobs.



Parking brake
Ratchet type parking brake requires less effort the operator to set.

Highly Durable Drive Axle with Wet Disc Type Brakes

The strengthened drive axle (separable from the transmission) ensures low vibration and easy maintenance. Wet disc brakes provide smooth braking, and are virtually maintenance free.



OPSS (Operator Presence Sensing System)

Mast tilting, lifting, and lowering functions become inoperable when the operator is not present in the seat."

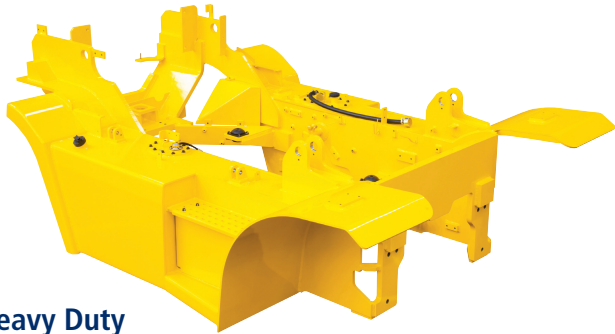


Large Footboard & Hand Grip

Wide "open" step offers convenience and safety when entering and exiting truck.



■ Some of the photos may include optional equipment.



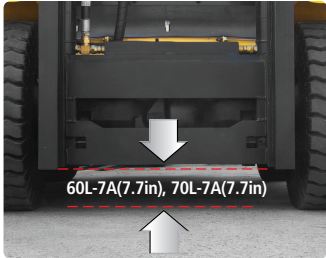
Heavy Duty Single Unit Frame

Heavy duty single unit type frame, designed on the basis of accurate structural analysis, guarantees durability and safety.



Bright, Protected Headlights

Bright, Protected head lights are positioned for exceptional visibility.



Ground Clearance

The engine and transmission are assembled horizontally and positioned high in the frame to protect major components during operation on rugged surface.

Designed for quick and easy service!

An ideal arrangement of component parts ensures easy access and convenience for maintenance.



Large Engine Hood

Highly accessible engine compartment assures fast and efficient maintenance.

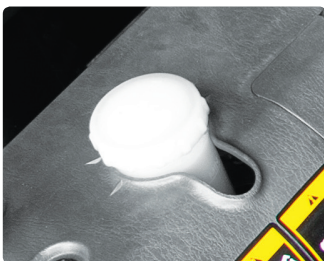


Easy Change Air Cleaner

The air filter is readily accessible for cleaning or replacement.



Up-to-date Cooling System



Brake Fluid Reservoir with Level Switch

When brake oil level became lower than Min., the warning lamp on the cluster lights on.



Easy Maintenance Oil Check

The T/M oil level can be checked easily without any disassembly.



Expansion Bellows

The expansion bellows absorbs vibration and reduces noise generated from the exhaust system and also extends the life cycle of exhaust system.



Grease Fittings

Grease fittings are installed for fast access to steering axle center pin when doing your service checks.





■ Some of the photos may include optional equipment.



Maintenance Free Battery



Large Tool Box

Additional tool box located in machine side for operator's convenience.



Easy-to-access Reservoir Tank



Wing Cover Locking System

Mast Specification

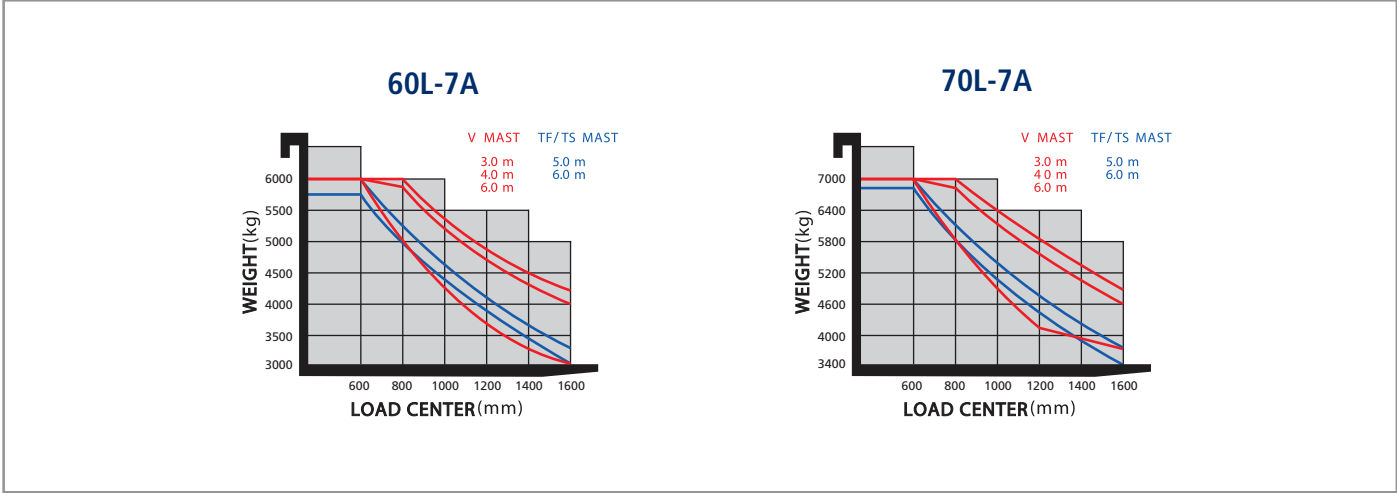
Model	Mast Type	Maximum Fork Height (in)	Overall Height(in)				Free Lift (in)		Tilt Angle (deg)		Load Capacity without side shift at 24in LC (lb)	Load Capacity with side shift at 24in LC (lb)	Truck Weight (Unloaded)(lb)
			Lowered	Extended		Without Load Backrest	With Std Load Backrest	Tilt Angle (deg)					
				W/o Load Backrest	W/Std Load Backrest			Fwd	Bwd				
60L-7A	2 Stage limited free lift	V270	107	93	154	158	5.5	5.5	15	10	13,228	13,228	19,354
		*V300	119	99	166	170	5.5	5.5	15	10	13,228	13,228	19,451
		V330	131	105	178	182	5.5	5.5	15	10	13,228	13,228	19,564
		V350	139	109	185	190	5.5	5.5	15	10	13,228	13,228	19,634
		V370	147	113	193	198	5.5	5.5	15	10	13,228	13,228	19,705
		V400	159	119	205	209	5.5	5.5	15	10	13,228	13,228	19,828
		V450	178	131	225	229	5.5	5.5	15	10	13,228	13,228	20,329
		V500	198	140	245	249	5.5	5.5	15	10	13,228	12,897	20,505
		V550	218	150	264	269	5.5	5.5	15	10	13,228	12,456	20,682
	V600	237	160	284	288	5.5	5.5	15	10	13,228	12,125	20,854	
	3 Stage full free lift	TF450/TS450	180	101	227	228	54	50	15	10	13,228	12,677	20,790
		TF500/TS500	199	109	247	248	61	58	15	10	13,228	12,346	20,992
		TF560/TS560	220	117	268	269	69	66	15	10	13,118	11,905	21,237
TF600/TS600		239	125	286	288	77	74	15	10	12,677	11,574	21,429	

*Standard : Hook-on Type Fork & Carriage

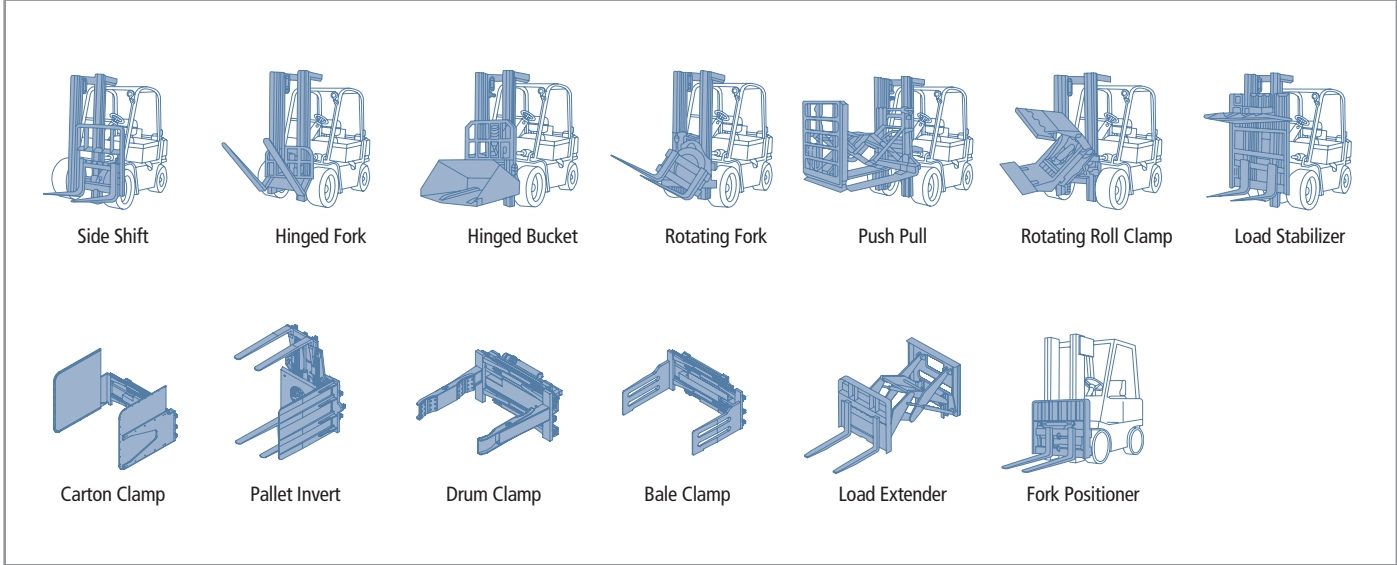
Model	Mast Type	Maximum Fork Height (in)	Overall Height(in)				Free Lift (in)		Tilt Angle (deg)		Load Capacity without side shift at 600in LC (lb)	Load Capacity with side shift at 24in LC (lb)	Truck Weight (Unloaded)(lb)
			Lowered	Extended		Without Load Backrest	With Std Load Backrest	Tilt Angle (deg)					
				W/o Load Backrest	W/Std Load Backrest			Fwd	Bwd				
70L-7A	2 Stage limited free lift	V270	107	93	154	158	5.5	5.5	15	10	15,432	15,432	20,849
		*V300	119	99	166	170	5.5	5.5	15	10	15,432	15,432	20,957
		V330	131	105	178	182	5.5	5.5	15	10	15,432	15,432	21,059
		V350	139	109	185	190	5.5	5.5	15	10	15,432	15,432	21,129
		V370	147	113	193	198	5.5	5.5	15	10	15,432	15,432	21,200
		V400	159	119	205	209	5.5	5.5	15	10	15,432	15,432	21,323
		V450	178	131	225	229	5.5	5.5	15	10	15,432	15,212	21,826
		V500	198	140	245	249	5.5	5.5	15	10	15,432	14,771	22,000
		V550	218	150	264	269	5.5	5.5	15	10	15,432	14,330	22,176
	V600	237	160	284	288	5.5	5.5	15	10	14,991	13,999	22,348	
	3 Stage full free lift	TF450/TS450	180	101	227	228	54	50	15	10	15,432	14,551	22,256
		TF500/TS500	199	109	247	248	61	58	15	10	15,212	14,110	22,458
		TF560/TS560	220	117	268	269	69	66	15	10	14,771	13,669	22,703
TF600/TS600		239	125	286	288	77	74	15	10	14,330	13,338	22,897	

*Standard : Hook-on Type Fork & Carriage

Load Capacity



Various Attachments



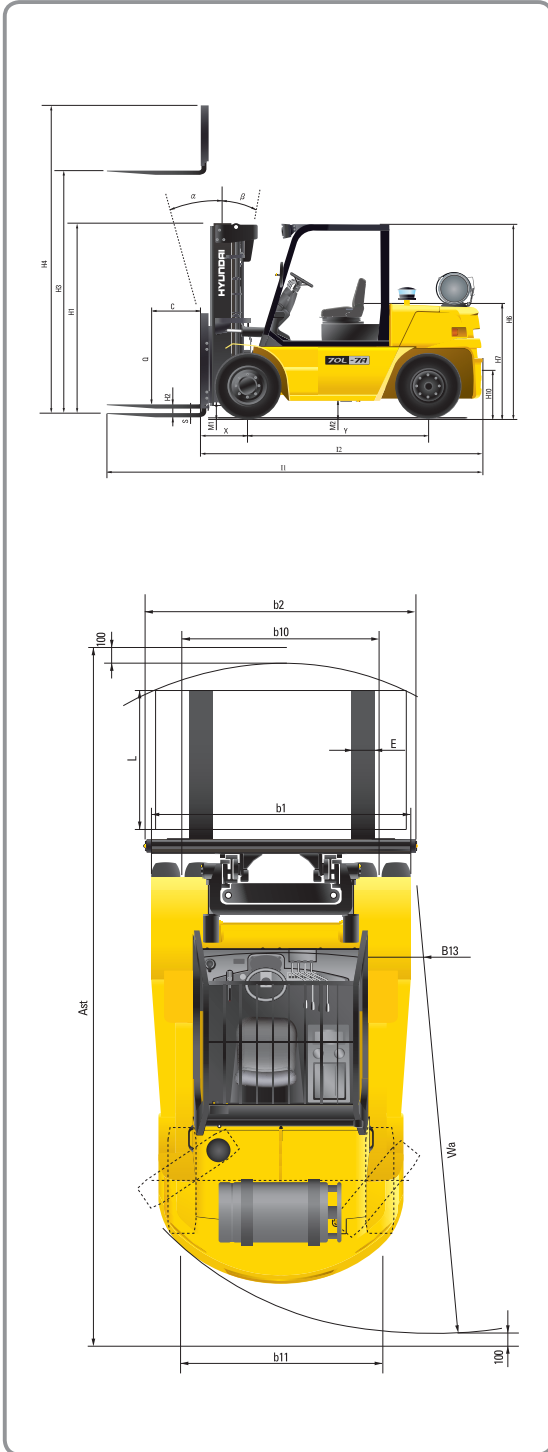
Optional Items

- **FORK (in)**
 - 53 / 59 / 71 / 79 / 94
 - **OVER SHOE**
 - 71 / 79 / 87 91
 - **SOLID NON-MARKING**
 - **SEAT : SEAT BELT, ARM REST, HIP REST**
 - **INTERNAL PIPING**
- **CABIN & HEATER**
 - CABIN, HEATER
 - **MUFFLER : HORIZONTAL**
 - **LPG TANK CLAMP : DUAL**
 - **MASTER SWITCH**
 - **ELE.BEACON**
 - **HAZARD SWITCH**
- **MCV : 3-SPOOL / 4-SPOOL / 5-SPOOL**
 - **INTEGRAL FORK POSITIONER CARRIAGE**
 - **INTEGRAL SIDE SHIFT CARRIAGE**
 - **INTEGRAL S/S WITH F/P CARRIAGE**

Notes

Notes

Dimension



Specification

Identification			
1.1	Manufacturer	Hyundai	Hyundai
1.2	Manufacturer's type designation	60L-7A	70L-7A
1.3	Drive: electric (battery or mains), diesel, petrol, fuel gas, manual	LP	LP
1.4	Type of operation: hand, pedestrian, standing, seated, order-picker	seated	seated
1.5	Load capacity / rated load	Q (lb) 13,228	15,432
1.6	Load center distance	c (in) 24	24
1.8	Load distance, center of drive axle to fork	x (in) 24	24
1.9	Wheelbase	y (in) 91	91
Weights			
2.1	Service weight	lb 19,537	20,790
2.2	Axle loading, loaded front/rear	lb 29,011 / 3,754	32,108 / 4,114
2.3	Axle loading, unloaded front/rear	lb 8,796 / 10,653	8,525 / 12,267
Wheels, Chassis			
3.1	Tires: solid rubber, superplastic, pneumatic, polyurethane	Pneumatic	Pneumatic
3.2	Tires size, front (width x Φ)	8.25-15	8.25-15
3.3	Tires size, rear (width x Φ)	8.25-15	8.25-15
3.5	Wheels, number front x rear (x=driven wheels)	452	452
3.6	Track width, front	b10 (in) 62	62
3.7	Track width, rear	b11 (in) 63	63
Basic Dimensions			
4.1	Mast / fork carriage tilt forward / backward (α/β)	degrees 15 / 10	15 / 10
4.2	Lowered mast height	h1 (in) 99	99
4.3	Free lift	h2 (in) 5.5	5.5
4.4	Lift height	h3 (in) 119	119
4.5	Extended mast height	h4 (in) 170	170
4.7	Overhead guard (cab) height	h5 (in) 98	98
4.8	Seat height / standing height	h7 (in) 55	55
4.12	Coupling height	h10 (in) 17	17
4.19	Overall length	l1 (in) 188	190
4.20	Length to face of forks	l2 (in) 141	143
4.21	Overall width	b1 (in) 82	82
4.22	Fork dimensions	s / e / l (in) 2.5 x 5.9 x 47	2.5 x 5.9 x 47
4.23	Fork carriage ISO 2328, class / type A/B	Class IV	Class IV
4.24	Fork-carriage width	b12 (in) 81	81
4.31	Ground clearance, loaded, under mast	m1 (in) 7.7	7.7
4.32	Ground clearance, centre of wheelbase	m2 (in) 8.7	8.7
4.33	Aisle width for pallets 1000x1200 crossways	Ast (in) 202	204
4.34	Aisle width for pallets 800x1200 lengthways	Ast (in) 210	212
4.35	Turning radius	Wa (in) 131	133
4.36	Smallest pivot point distance	b13 (in) 48	48
Performance Data			
5.1	Travel speed, Unloaded	mph 14	14
5.2	Lift speed, Loaded/Unloaded	ft/min 83 / 83	83 / 83
5.3	Lowering speed, Loaded/Unloaded	ft/min 98 / 89	98 / 89
5.5	Drawbar pull, Loaded	lb 15,051	15,126
5.7	Gradient performance, Loaded	% 45.6	40.6
5.10	Service brake	Foot : Hydraulic	Foot : Hydraulic
Engine			
6.1	Engine manufacturer / type	GM 4.3L V6	GM 4.3L V6
6.2	Engine power acc. to ISO 1585	hp 94	94
6.3	Rated speed	1/min 2,300	2,300
6.4	No. of cylinder / cubic capacity	/in ³ 6 / 262	6 / 262
Other Details			
8.2	Type of drive control	Power Shift	Power Shift
8.3	Operating pressure	bar 185	185
8.4	Oil volume(system)	ℓ 94	94
8.5	Noise	db(A) 82	82

HYUNDAI | FORKLIFT
CONSTRUCTION EQUIPMENT AMERICAS, INC.

6100 Atlantic Blvd Norcross, GA 30071
TEL (678) 823 7777 FAX (678) 823 7778

PLEASE CONTACT

www.hceamericas.com

2015. 03 Rev. 0