

# 25/30/33L-9A 35LN-9A

LPG Counterbalance Trucks

MOVING YOU FURTHER

HYUNDAI MATERIAL HANDLING



 **HYUNDAI**  
MATERIAL HANDLING

North American Headquarters  
6100 Atlantic Blvd, Norcross, GA 30071  
TEL (678) 823 7777 FAX (687) 823 7778

PLEASE CONTACT

[www.hceamericas.com](http://www.hceamericas.com)

2017. 06 Rev. 0

 **HYUNDAI**  
MATERIAL HANDLING

■ Some of the photos may include optional equipment.

# Your satisfaction is **our priority!**

Hyundai introduces a new line of **9-series** diesel forklift trucks. The newly designed four wheel counterbalance trucks provide operators increased comfort, productivity and ease of maintenance.

## New Diesel Forklift with Proven Quality and Advanced Technology

- Maximum performance
- Spacious operator's cab
- Switch controlled parking brake
- 5.6 inch LCD color monitor
- Truck inclination warning system
- OPSS System for safe operation
- Ease of serviceability
- Speed Limit Function
- HAC (Hill start Assist Control)
- Password starting system
- Auto fork leveling system (Optional)
- Load weight indicator



# High Efficiency & Optimal Performance



Powerful engine and high technology systems provide you with enhanced performance and high productivity.

**25/30/33L-9A**  
**35LN-9A**



■ Some of the photos may include optional equipment.

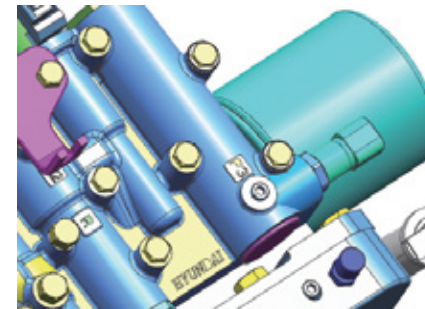


## Hyundai L4KB (2.4L) Engine 60 HP / 2300 rpm

### Powerful Engine - Hyundai L4KB (2.4L)

The high quality Hyundai Motor Company L4KB engine ensures incomparable performance, durability and value.

Powerful and efficient engine provides excellent fuel consumption and torque. (EPA/CARB Tier-IV Certified)



### Clutch Protection System

The clutch protection system warns of excessive use of inching as well as minimizing direction change impact.



### Hydraulic Brake Booster

Hydraulic assisted brakes provide strong, consistent brake performance.



### Highly Durable Drive Axle with Wet Disc Brakes

A strong drive axle separate from the transmission ensures low vibration and easy maintenance. The wet disc brake system is virtually maintenance free and the enclosed design protects from dust and water.



### Fully Hydrostatic Power Steering

The hydraulic steering system always guarantees smooth and flexible steering, preventing over-run and kick-back.



### Travel Speed (MAX)

Model	mph
25L-9A	11.5
30L-9A	12.4
33L-9A	12.4
35LN-9A	11.7

### Gradeability (MAX)

Model	%
25L-9A	40.7
30L-9A	31.9
33L-9A	28.3
35LN-9A	28.6

### Faster Travel Speed & Gradeability

The powerful high-output engine provides greater acceleration, better gradeability and faster travel speed on any tough terrain or slope.

# Best Convenience & Optimized Ergonomics



The ergonomically designed cabin and the new style LCD color monitor provides full support and comfort to the operator.

**25/30/33L-9A**  
**35LN-9A**



Some of the photos may include optional equipment.

## Spacious Operator Cabin

The newly designed cabin provides wide visibility and spacious environment, ensuring all day comfort for the operator.



## Optimized Pedal Position

On the 9-series the pedals are mounted to the console to reduce operator fatigue, and noise and dust from the engine compartment.



## Adjustable Steering Wheel

The angle of the steering column can easily be adjusted to improve operator comfort.



## Fingertip (Optional)

Ergonomically designed fingertip control levers for improved operator comfort and productivity.

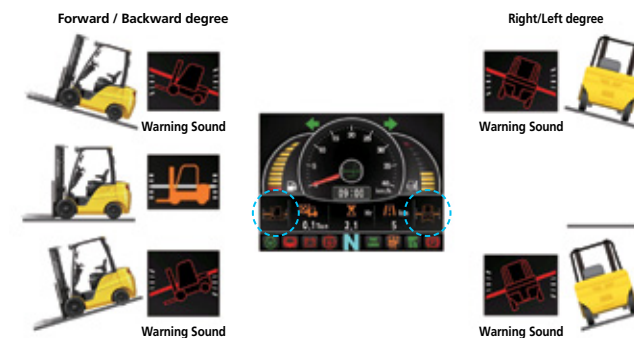


## Comfortable Grammer Seat

Easily adjustable suspension seat, provides great comfort, safety and durability.  
\*ELR (Energy Locking Retractor) Type Seat Belt  
\*Heater and Head-rest (OPT)

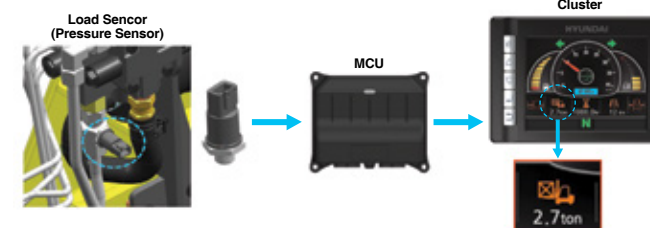
## Advanced LCD Monitor

The 5.6 inch wide screen LCD color monitor provides the operator information to safely operate the machine. The monitor features speed, load weight indicator, machine tilt inclination and hour meter.



## Truck Inclination Warning System

To improve the productivity and safety, the truck inclination warning system will monitor and indicate forward/backward, right/left degree of the forklift. The alarm alerts the operator when the forklift degree is over the ISO standard.



## Load Weight Indicator

The load weight indicator displays the load weight on the monitor. The load sensor reduces the time to check loaded weight and an alarm alerts the driver when overloaded.



## Auto Fork Leveling System (Optional)

The auto fork leveling system improves productivity by automatically stopping when the forks are level.

# Advanced Safety



The advanced design of the operator compartment is designed for safety and comfort.

**25/30/33L-9A**  
**35LN-9A**



## Excellent Visibility for Safe Operation

Optimized lift cylinder arrangement provides operator with wider visibility. The panoramic mirror expands the driver's view when backing up.

■ Some of the photos may include optional equipment.



## Strong Overhead Guard

Exceeding ISO6055 and ANSI regulations, the overhead guard offers optimal protection combined with excellent all round visibility.



## Low Entrance Height

The low entrance height ensures easy and safe access for the operator.



## Steel Side Cover (Optional)

The strengthened steel side cover provides enhanced durability.



## Rear Horn

For safety it encourages the operators hand to remain within the forklift at all times. The integrated switch allows the operator to sound the horn when traveling in reverse.



## HAC (Hill start Assist Control)

Activates anti-roll back by engaging the parking brake when the unit is stopped on a ramp until the operator resumes travel.

## Fork Safety Features

As the forks are being lowered, a down-control valve maintains a controlled descent speed. The down-safety valve prevents forks from dropping down in case of sudden damage of hydraulic line.

## OPSS (Operator Presence Sensing System)

When operator is not in seat the hydraulic lift and tilt controls and travel are locked out and the parking brake sets automatically.

Lift Lock Tilt Lock Drive Lock Parking



■ Some of the photos may include optional equipment.



## Safety Lamps & Rear Reflectors

LED headlights and rear LED combination lights offer the driver visibility in all circumstances. Rear reflectors mounted on the counterweight enhance safety for the driver and the application.

# Fast and Easy Maintenance

An ideal arrangement of components ensures easy access and convenience for maintenance.

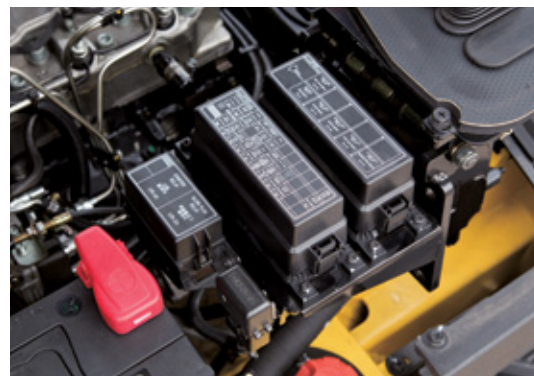
**25/30/33L-9A**  
**35LN-9A**



## Large Engine Hood

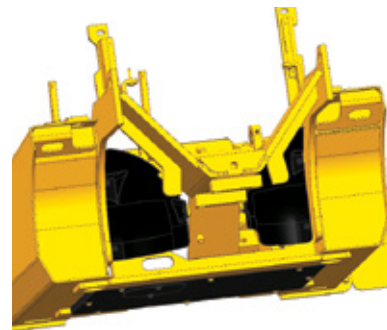
Highly accessible engine compartment assures fast and efficient maintenance.

■ Some of the photos may include optional equipment.



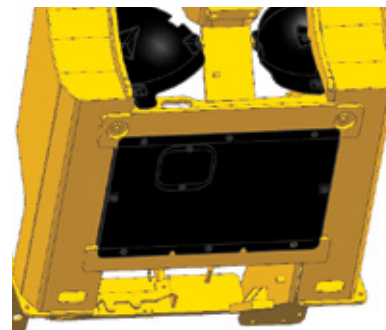
## Waterproof & Dustproof Cover

Newly developed Waterproof and Dustproof fuse box and relay box for ease of maintenance.



## Rear Tire Cover (Optional)

Equipped to help prevent clogging of radiator by site materials.



## Under Cover (Optional)

This cover protects engine and components from operation site debris. Helps to extend component life ..



**Rear View Camera**  
(Optional)



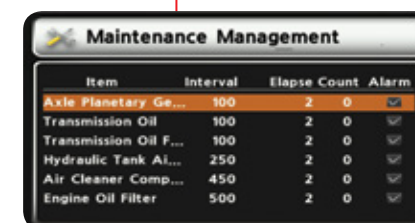
**Parking Brake Switch**

With auto parking function when the operator is not in the seat

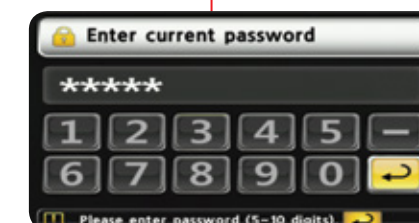


**Emergency Switch**  
(option)

\*Some of the photos may include optional equipment.



**Maintenance Management Display**



**Password Starting System**  
(Anti-theft system)

# New 9 Series

**25/30/33L-9A**  
**35LN-9A**

## Mast Specification (25L-9A)

Mast Type	Maximum Fork Height		Overall Height (Lowered)		Free Lift Height				Tilt Angle	Load Capacity without side shift		Load Capacity with side shift		Truck Weight (Unloaded)				
	in	mm	in	mm	With Load Backrest		Without Load Backrest			Single Tire	Double Tire	Single Tire	Double Tire	Single Tire	Double Tire	Single Tire	Double Tire	
					in	mm	in	mm	lb									kg
2-Stage Limited free lift	V300	118.3	3005	79.7	2025	4.5	155	4.5	155	6/10	5000	5000	5000	5000	8161	3702	8488	3850
	*V330	130.1	3305	85.6	2175	4.5	155	4.5	155	6/10	5000	5000	5000	5000	8203	3721	8532	3870
	V350	138.0	3505	89.6	2275	4.5	155	4.5	155	6/10	5000	5000	5000	5000	8241	3738	8569	3887
	V370	145.9	3705	95.5	2425	4.5	155	4.5	155	6/10	5000	5000	5000	5000	8267	3750	8598	3900
	V400	157.7	4005	101.4	2575	4.5	155	4.5	155	6/10	5000	5000	5000	5000	8355	3790	8684	3939
	V430	169.5	4305	107.3	2725	4.5	155	4.5	155	6/6	5000	5000	5000	5000	8470	3842	8799	3991
	V450	177.4	4505	113.2	2875	4.5	155	4.5	155	6/6	5000	5000	4870	5000	8519	3864	8847	4013
	V470	185.2	4705	117.1	2975	4.5	155	4.5	155	6/6	4960	5000	4740	5000	8552	3879	8878	4027
V500	197.0	5005	123.0	3125	4.5	155	4.5	155	6/6	4850	5000	4630	5000	8600	3901	8926	4049	
2-Stage full free lift	VF295 / VS295	117.2	2976	79.7	2025	33.3	845	54.2	1377	6/6	5000	5000	5000	5000	8205	3722	8543	3875
	VF325 / VS325	129.0	3276	85.1	2175	38.7	995	60.2	1527	6/6	5000	5000	5000	5000	8278	3755	8618	3909
	VF345 / VS345	136.9	3476	89.6	2275	43.1	1095	64.1	1627	6/6	5000	5000	5000	5000	8331	3779	8688	3941
3-Stage full free lift	TF370/TS370	145.9	3705	71.9	1825	25.4	645	46.3	1177	6/6	5000	5000	5000	5000	8404	3812	8743	3966
	TF400/TS400	157.7	4005	75.8	1925	29.3	745	50.3	1277	6/6	5000	5000	5000	5000	8457	3836	8796	3990
	TF430/TS430	169.5	4305	79.7	2025	33.3	845	54.2	1377	6/6	5000	5000	5000	5000	8496	3854	8836	4008
	TF450/TS450	177.4	4505	83.7	2125	37.2	945	58.1	1477	6/6	5000	5000	4850	5000	8545	3876	8884	4030
	TF470/TS470	185.2	4705	85.6	2175	39.2	995	60.1	1527	6/6	4920	5000	4700	4860	8576	3890	8913	4043
	TF500/TS500	197.0	5005	89.6	2275	43.1	1095	64.1	1627	6/6	4810	4940	4590	4720	8624	3912	8962	4065
	TF550/TS550	216.7	5505	97.4	2475	51.0	1295	71.9	1827	6/6	3240	4780	3020	4560	8710	3951	9048	4104
	TF600/TS600	236.4	6005	105.3	2675	58.9	1495	79.8	2027	6/6	2930	4590	2710	4370	8854	4016	9191	4169
TF650/TS650	256.1	6505	113.2	2875	66.7	1695	87.7	2227	3/3	2840	4540	2620	4320	8955	4062	9295	4216	
TF700/TS700	275.8	7005	121.1	3075	74.6	1895	95.6	2427	3/3	2430	4370	2210	4150	9039	4100	9378	4254	
4-Stage full free lift	QF610	240.7	6115	85.0	2160	38.6	980	59.5	1512	3/3	3200	3400	2960	3160	9387	4258	9771	4432
	QF660	260.4	6615	92.9	2360	46.5	1180	67.4	1712	3/3	2800	3200	2560	2960	9519	4318	9901	4491
	QF700	276.2	7015	96.9	2460	50.4	1280	71.3	1812	3/3	2200	3000	1960	2760	9586	4348	9969	4522
	QF745	293.9	7465	102.8	2610	56.3	1430	77.2	1962	3/3	1600	2800	1360	2560	9687	4394	10071	4568
	QF790	311.6	7915	108.7	2760	62.2	1580	83.1	2112	3/3	1200	2400	960	2160	9907	4494	10291	4668

## Mast Specification (33L-9A)

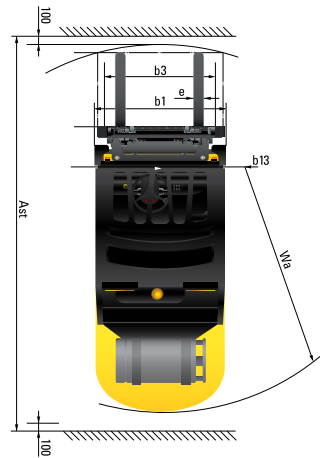
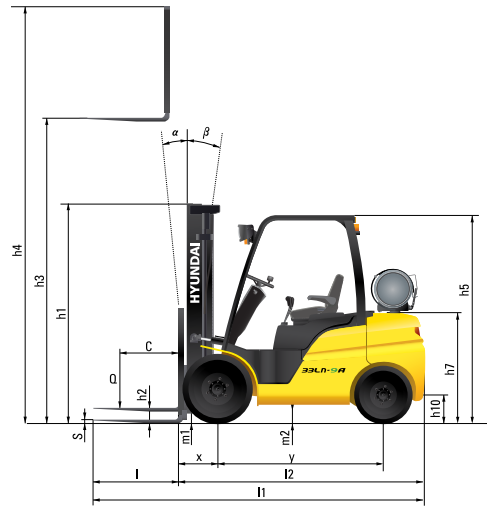
Mast Type	Maximum Fork Height		Overall Height (Lowered)		Free Lift Height				Tilt Angle	Load Capacity without side shift		Load Capacity with side shift		Truck Weight (Unloaded)				
	in	mm	in	mm	With Load Backrest		Without Load Backrest			Single Tire	Double Tire	Single Tire	Double Tire	Single Tire	Double Tire	Single Tire	Double Tire	
					in	mm	in	mm	lb									kg
2-Stage Limited free lift	V300	118.3	3005	83.1	2110	4.5	155	4.5	155	6/10	6500	6500	6500	6500	9636	4371	9923	4501
	*V330	130.1	3305	89.0	2260	4.5	155	4.5	155	6/10	6500	6500	6500	6500	9689	4395	9976	4525
	V350	138.0	3505	92.9	2360	4.5	155	4.5	155	6/10	6500	6500	6500	6500	9722	4410	10011	4541
	V370	145.9	3705	98.8	2510	4.5	155	4.5	155	6/10	6500	6500	6500	6500	9755	4425	10040	4554
	V400	157.7	4005	104.7	2660	4.5	155	4.5	155	6/10	6500	6500	6500	6500	9846	4466	10132	4596
	V430	169.5	4305	110.6	2810	4.5	155	4.5	155	6/6	6500	6500	6500	6500	9965	4520	10251	4650
	V450	177.4	4505	116.5	2960	4.5	155	4.5	155	6/6	6500	6500	6500	6500	10015	4543	10304	4674
	V470	185.2	4705	120.5	3060	4.5	155	4.5	155	6/6	6500	6500	6300	6500	10051	4559	10337	4689
V500	197.0	5005	126.4	3210	4.5	155	4.5	155	6/6	6420	6500	6120	6500	10104	4583	10390	4713	
2-Stage full free lift	VF295 / VS295	117.2	2976	83.1	2110	36.6	930	54.5	1384	6/6	6500	6500	6500	6500	9819	4454	10099	4581
	VF325 / VS325	129.0	3276	88.3	2260	41.9	1080	60.1	1534	6/6	6500	6500	6500	6500	9899	4490	10179	4617
	VF345 / VS345	136.9	3476	89.0	2260	46.5	1180	64.3	1634	6/6	6500	6500	6500	6500	9976	4525	10254	4651
3-Stage full free lift	TF370/TS370	145.9	3705	75.2	1910	28.7	730	43.9	1114	6/6	6500	6500	6500	6500	10135	4597	10414	4724
	TF400/TS400	157.7	4005	79.1	2010	32.7	830	47.8	1214	6/6	6500	6500	6500	6500	10183	4619	10463	4746
	TF430/TS430	169.5	4305	83.1	2110	36.6	930	51.7	1314	6/6	6500	6500	6500	6500	10229	4640	10509	4767
	TF450/TS450	177.4	4505	87.0	2210	40.6	1030	55.7	1414	6/6	6500	6500	6270	6500	10276	4661	10558	4789
	TF470/TS470	185.2	4705	89.0	2260	42.5	1080	57.6	1464	6/6	6350	6500	6050	6290	10306	4675	10586	4802
	TF500/TS500	197.0	5005	92.9	2360	46.5	1180	61.6	1564	6/6	6260	6390	5960	6090	10355	4697	10635	4824
	TF550/TS550	216.7	5505	100.8	2560	54.3	1380	69.4	1764	6/6	4560	6170	4260	5870	10452	4741	10732	4868
	TF600/TS600	236.4	6005	108.7	2760	62.2	1580	77.3	1964	6/6	3130	5950	2830	5650	10613	4814	10893	4941
TF650/TS650	256.1	6505	116.5	2960	70.1	1780	85.2	2164	3/3	3060	5910	2760	5610	10719	4862	10999	4989	
TF700/TS700	275.8	7005	124.4	3160	78.0	1980	93.1	2364	3/3	2650	5710	2350	5410	10809	4903	11089	5030	
4-Stage full free lift	QF610	240.7	6115	87.6	2225	41.1	1045	57.0	1449	3/3	3600	3800	3240	3440	10891	4940	11182	5072
	QF660	260.4	6615	95.5	2425	49.0	1245	64.9	1649	3/3	3200	3600	2840	3240	11023	5000	11314	5132
	QF700	276.2	7015	99.4	2525	53.0	1345	68.9	1749	3/3	2600	3400	2240	3040	11089	5030	11380	5162
	QF745	293.9	7465	105.3	2675	58.9	1495	74.8	1899	3/3	2000	3200	1640	2840	11184	5073	11475	5205
	QF790	311.6	7915	111.2	2825	64.8	1645	80.7	2049	3/3	1600	2800	1240	2440	11411	5176	11704	5309

## Mast Specification (30L-9A)

Mast Type	Maximum Fork Height		Overall Height (Lowered)		Free Lift Height				Tilt Angle	Load Capacity without side shift		Load Capacity with side shift		Truck Weight (Unloaded)				
	in	mm	in	mm	With Load Backrest		Without Load Backrest			Single Tire	Double Tire	Single Tire	Double Tire	Single Tire	Double Tire	Single Tire	Double Tire	
					in	mm	in	mm	lb									kg
2-Stage Limited free lift	V300	118.3	3005	80.3	2040	4.5	155	4.5	155	6/10	6000	6000	6000	6000	9030	4096	9303	4220
	*V330	130.1	3305	86.2	2190	4.5	155	4.5	155	6/10	6000	6000	6000	6000	9074	4116	9347	4240
	V350	138.0	3505	90.2	2290	4.5	155	4.5	155	6/10	6000	6000	6000	6000	9114	4134	9387	4258
	V370	145.9	3705	96.1	2440	4.5	155</											

# New 9 Series

## Dimension

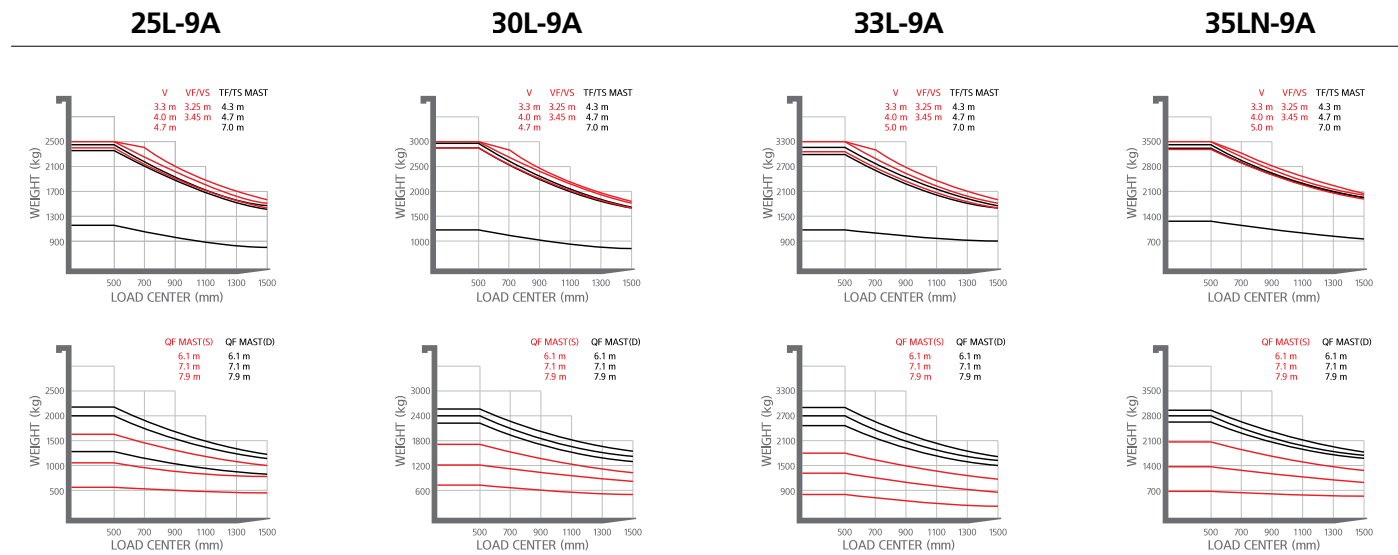


## Specification

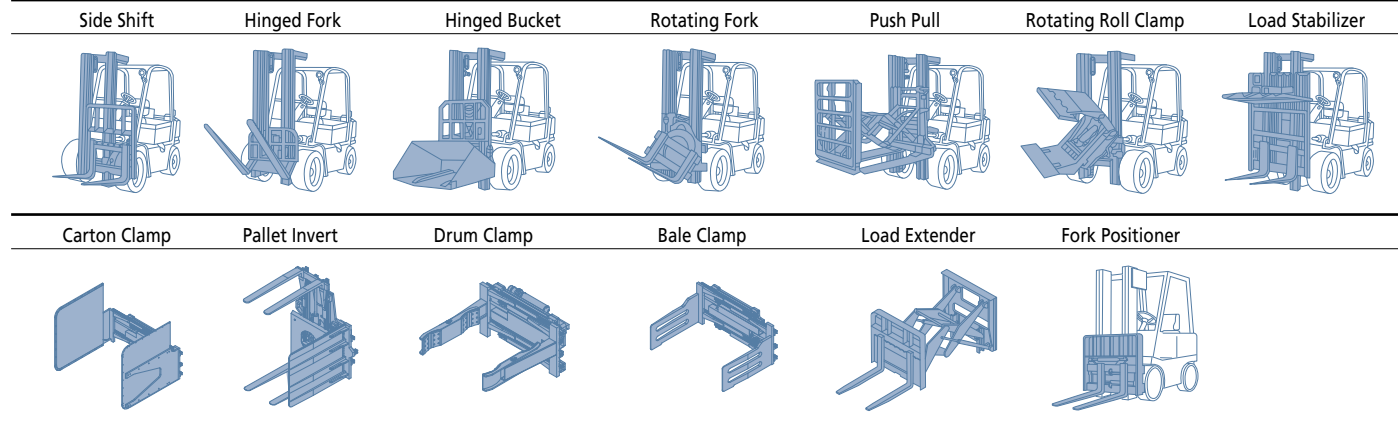
Identification					
1.1	Manufacturer	Hyundai	Hyundai	Hyundai	Hyundai
1.2	Manufacturer's model designation	25L-9A	30L-9A	33L-9A	35LN-9A
1.3	Drive: electric (battery or mains), diesel, petrol, fuel gas, manual	LPG	LPG	LPG	LPG
1.4	Type of operation: hand, pedestrian, standing, seated, order-picker	seated	seated	seated	seated
1.5	Load capacity / Rated load	lb 5,000	6,000	6,500	7,000
1.6	Load center distance	c inch 24	24	24	24
1.8	Load distance, center of drive axle to fork	x inch 18.5	18.5	18.5	18.5
1.9	Wheelbase	y inch 65	67	67	67
Weights					
2.1	Service weight	lb 8203	9074	9689	9998
2.2	Axle loading, loaded front / rear	lb 12,273 / 1,812	14,054 / 1,997	15,007 / 2,323	15,304 / 2,407
2.3	Axle loading, unloaded front / rear	lb 3,527 / 5,044	3,675 / 5,765	3,589 / 6,466	3,194 / 6,801
Wheels, Chassis					
3.1	Tires ; Pneumatic(P), Solid(S), Non-marking(N)	P	P	P	P
3.2	Tires size, front	Single 7.00-12-14PR	28X9-15-14PR	28X9-15-14PR	28X9-15-14PR
	Double	6.00-15-10PR	6.00-10-10PR	6.00-10-10PR	6.00-10-10PR
3.3	Tires size, rear	6.50-10-12PR	6.50-10-12PR	6.50-10-12PR	6.50-10-12PR
3.4	Number of wheels front / rear (x=driven wheels)	2x / 2	2x / 2	2x / 2	2x / 2
3.5	Tires width, front	Single inch 39	39.5	39.5	39.5
	Double	inch 45	45	45	45
	Tires width, rear	inch 38.5	38.5	38.5	38.5
Basic Dimensions					
4.1	Mast / fork carriage tilt forward / backward (α/β) degrees	6 / 10	6 / 10	6 / 10	6 / 10
4.2	Lowered mast height	h1 (inch) 85.6	86	89	89
4.3	Free lift	h2 (inch) 6	6	6	6
4.4	Lift height	h3 (inch) 130	130	130	130
4.5	Extended mast height	h4 (inch) 176.5	176.5	176.5	176.5
4.7	Overhead guard height (cabin)	h5 (inch) 85 (85.5)	85.8 (86.2)	85.8 (86.2)	85.8 (86.2)
4.8	Seat height / standing height rel. to SIP	h7 (inch) 46.7	47.7	47.7	47.7
4.12	Coupling height	h10 (inch) 11.6	12.5	12.5	12.5
4.19	Overall length	l1 (inch) 144	146.7	148.9	148.9
4.20	Length to face of forks	l2 (inch) 102.6	105.3	107.5	108.5
4.21	Overall width	Single b1 (inch) 47	48.3	48.3	48.3
	Double	b1 (inch) 59.7	59.7	59.7	59.7
4.22	Fork dimensions(hook type)	l / e / s (inch) 41.3 x 3.9 x 1.7	41.3 x 4.8 x 1.7	41.3 x 4.8 x 1.7	41.3 x 4.8 x 1.7
4.23	Fork Carriage ITA Class	II	III	III	III
4.24	Fork-carriage width	b3 (inch) 43.3	43.3	43.3	43.3
4.31	Ground clearance, loaded, under mast	m1(inch) 5	5.7	5.7	5.7
4.32	Ground clearance, centre of wheelbase	m2(inch) 6	7	7	6.7
4.33	Aisle width for pallets 1,000x1,200 crossways (LxW)	Ast(inch) 157.8	160.6	162.6	162.6
4.34	Aisle width for pallets 800x1,200 lengthways (WxL)	Ast(inch) 165.7	168.5	170.5	170.5
4.35	Turning radius	Wa(inch) 92	95	96.9	98
4.36	Smallest pivot point distance	b13 (inch) 28	28.7	28.7	28.7
Performance Data					
5.1	Travel speed, unloaded	mph 11.5	12.4	12.3	11.7
5.2	Lift speed, loaded/ unloaded	inch/s 22.8 / 23.2	22.4 / 23.2	18.1 / 18.9	17.7 / 18.9
5.3	Lowering speed, loaded/unloaded	inch/s 19.7 / 17.7	19.7 / 17.7	19.7 / 17.7	19.7 / 17.7
5.5	Drawbar pull, loaded	lb 5,921.6	5,372.6	5,385.9	4,781.8
5.7	Gradient performance, loaded	% 40.7	31.9	28.3	28.6
5.9	Acceleration time, loaded/ unloaded(10m)	sec -	-	-	-
5.10	Service brake	FOOT	FOOT	FOOT	FOOT
Engine					
6.1	Engine manufacturer / type	HMCL4KB	HMCL4KB	HMCL4KB	HMCL4KB
6.2	Engine power acc. to ISO 1585	hp/rpm 60 / 2300	60 / 2300	60 / 2300	60 / 2300
6.3	Maximum Torque	lbf-ft/rpm 137 / 1800	137 / 1800	137 / 1800	137 / 1800
6.4	No. of cylinder / cubic capacity	EA/cc 4 / 2,359	4 / 2,359	4 / 2,359	4 / 2,359
6.5	Fuel consumption acc. To VDI cycle	l/h -	-	-	-
Other Details					
8.1	Type of drive control	PowerShift	PowerShift	PowerShift	PowerShift
8.2	Operating pressure, system / attach	psi 2843 / 2450	2988 / 2450	2988 / 2450	3132 / 2450
8.3	Oil volume (hydraulic)	l 30(60 Max.)	30(60 Max.)	30(60 Max.)	30(60 Max.)
8.4	Sound pressure level (at driver's ear according to DIN 12053)	dB(A) 80	80	80	80
8.5	Trailer coupling, type DIN	PIN	PIN	PIN	PIN

# 25/30/33L-9A 35LN-9A

## Load Capacity



## Various Attachments



## Optional Items

- Fork(mm)
  - 25L-9A : 900, 1000, 1050(STD), 1200, 1350, 1500, 1650, 1800, 2100
  - 30/33L-9A, 35LN-9A : 900, 1050(STD), 1150, 1200, 1650, 1800, 1970, 2120, 2300, 2400
- Integral Sideshift, Fork Positioner, Sideshift, Integral Fork Positioner with Sideshift
- Tire : Solid(superelastic) / Non-marking / Front double tire
- M.C.V : 4-Spool
- Seat : Armrest, Heat, Backrest Ext, Buckle SW
- Auto Fork Leveling System
- Rear View Camera
- Cabin(Heater, A/C)
- Beacon Lamp(LED) (Amber, Red, Blue)
- Rear work Lamp(Bulb or LED)
- F-N-R & Horn Knob switch
- Finger Tip Control Lever